

## Why Own Prime?

- Substantial **value creation** currently underway at historic **Los Reyes**, an **under-explored, high grade gold-silver** project in **Mexico's prolific Sierra Madre Belt**
- Gold-silver resource significantly expanded** in Oct 2024 with **initial underground resource**; excellent discovery potential via success-based drill program
- Technical de-risking underway**, working toward Preliminary Economic Assessment
- Robust approach to **ongoing ESG programs**
- Significant **insider ownership**, supportive **cornerstone shareholders, strong treasury**
- Accomplished** Management team and Board of Directors

### Prioritizing Environmental, Social and Corporate Governance

#### Our Commitments

- Prime is committed to human rights, equality, responsible labour practices, health & safety in our workforce
- Responsible stewardship of the local environment is the heart of our corporate values.
  - We work to minimize the environmental impact of our activities.
  - We aim to offset our activities by engaging in outreach initiatives to improve the local environment

#### Words into Action

- Annual ESG Report (inaugural April 2023)
- Long-term prosperity of the community including well paying employment
- Servicing local goods and services
- Support for community enhancement initiatives
- Local community participant
- 30-year surface rights agreement with community



## About Prime Mining Corp.

Prime Mining is supported by a team of successful mining executives, strong capital markets personnel, and experienced local operators focused on unlocking the full potential of the Los Reyes project. Prime's strong capital structure is comprised of significant insider ownership and leading successful mining entrepreneurs.

### Location, Infrastructure and Historical Work



#### Location

- Prolific Sierra Madre Occidental along the west coast of Mexico
- Proximity to major mining operations
- 43 km from Cosalá in the historic mining region of Sinaloa
- Local community steeped in mining culture for over a century
- 6,250+ hectares under exploration within Los Reyes claim block

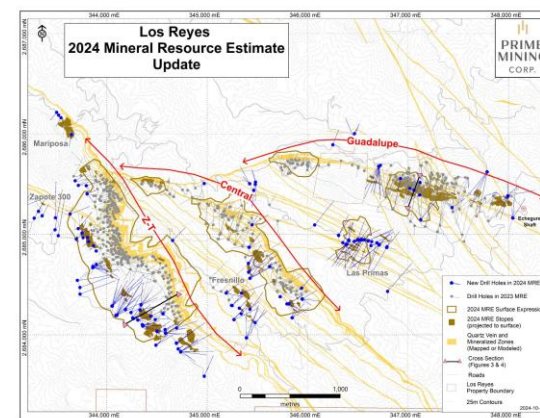
#### Infrastructure & Resources

- Roads:** Highway from Mazatlán to Cosalá, road network on property
- Power:** Local line runs through property with established right of way
- Water:** Access in place for current stage with options for operations
- People:** Strong mining talent and labour pool in Mexico

#### Exploration Work

- Limited drilling at depth below resource base and along strike
- Previous owners >50km of drilling and technical studies
- Prime has drilled >220km since acquiring the property in 2019

## Growing Multi-Million Ounce High-Grade Resource



### Mineral Resource Estimate (MRE)- Oct 2024<sup>1</sup>

#### Open-Pit Milled:

- Indicated: 1.27 Moz AuEq (24.7 at 1.6 g/t AuEq)
- Inferred: 335koz AuEq (7.2 Mt at 1.45 g/t AuEq)

#### \*New\* Underground Milled:

- Indicated: 664koz AuEq (4.1 Mt at 5.00 g/t AuEq)
- Inferred: 406koz AuEq (4.0 Mt at 3.12 g/t AuEq)

#### Open-Pit Heap Leach:

- Indicated 261 koz AuEq (20.3 Mt at 0.40 g/t AuEq)
- Inferred: 76 koz AuEq (5.9 Mt at 0.40 g/t AuEq)

- Large, structurally controlled epithermal system with multiple mineralized NW/SE structures
- Prime completed ~191km of drilling to support Oct 2024 Resource Update - 93% diamond core drilling
- Significant post-MRE drilling continues
- 3 main Resource areas under primary exploration:
  - Guadalupe
  - Z-T
  - Central
- Multiple high-potential Generative targets outside of main resource areas being explored

<sup>1</sup> Based on drilling to July 17, 2024 drilling cutoff. \*AuEq\* or gold equivalents are calculated as in-situ contained grades, applying assumed ratio of gold to silver prices using formula: AuEq grade (g/t) = Gold grade (g/t) x Silver grade (g/t) x (\$25.24 / \$1950); for more information see <https://www.prime-mining.com>.

## Next Steps

- Success-based drilling program to continue in 2025
- Engineering and project optimization, advancing toward a Preliminary Economic Assessment
- Continued engagement with community, stakeholders
- Baseline environmental survey complete; permit planning ongoing

## Management Team

- Scott Hicks, P.Eng, CFA, CEO & Director
- Scott Smith, P.Geo., EVP Exploration
- Ian Harcus, CPA, CFO
- Indi Gopinathan, P.Eng., CPA, MBA, VP Capital Mkts. & Bus. Dev.
- Alejandro Caraveo, Country Manager – Mexico
- Bruce Kienlen, P.Geo., Senior Geologist
- Patrick Loury, M.Sc., CPG, Manager - Geology & Mineral Rsce.
- Jorge Palma, Senior Geologist

## Board of Directors

- Murray John, B.Sc. Eng., MBA (Chair)
- Andrew Bowering; Executive Advisor
- Scott Hicks, P.Eng, CFA
- Chantal Gosselin, B.Sc. Eng.
- Edie Hofmeister, MA, JD
- Sunny Lowe, CPA, CA, MBA
- Marc Prefontaine, P.Eng.
- Kerry Sparkes, P.Geo.
- Paul Sweeney



## Capital Structure

<b>149M</b>	<b>\$19M</b>
Shares Outstanding	Cash: Dec 31, 2024
<b>174M</b>	<b>\$0</b>
Fully Diluted Shares <sup>1</sup>	Debt
<b>\$240M</b>	<b>\$200M</b>
FDITM Market Cap <sup>1</sup>	EV <sup>1</sup>

## Major Shareholders<sup>1</sup>

<b>Strategic (Pierre Lassonde)</b>	<b>15%</b>
<b>Management &amp; Board</b>	<b>10%</b>
<b>Institutional/HNW</b>	<b>45%</b>
Trinity Capital	Global X
Merk AM	RBC GAM
Franklin	Konwave
Van Eck	Sprott AM
BMO AM	DWS

<sup>1</sup>.Market based figures as at Feb 5, 2025

## Engage with us



(604) 238-1659  
[info@primeminingcorp.ca](mailto:info@primeminingcorp.ca)  
[www.primeminingcorp.ca](http://www.primeminingcorp.ca)



@PrimeMiningCorp  
 /Prime-Mining-Corp